

# CATALOGUE

Synerg**Eyes**

TRANSFORM YOUR PRACTICE  
WITH **SYNERGEYES**  
HYBRID CONTACT LENSES.

**CATALOGUE**



**SPECTRUM**  
INTERNATIONAL

 [www.spctinternational.com](http://www.spctinternational.com)   [spctinternational](https://www.facebook.com/spctinternational)  
 [Spectrum International](https://www.youtube.com/SpectrumInternational)  [sales@spctinternational.com](mailto:sales@spctinternational.com)

# HYBRID PRODUCT MATRIX

Corneal Conditions	1st Choice	2nd Choice
Spherical Eye: Myopia and Hyperopia	 Duette	 SynergEyes A
Astigmatism up to 2.25 D	 Duette	 SynergEyes A
Astigmatism 2.5 D or more	 Duette Enhanced Profile	 SynergEyes A Enhanced Profile
Normal Cornea with Presbyopia	 Duette Progressive	
Presbyopia with Astigmatism up to 2.00 D	 Duette Progressive Near or Distance Zone	
Presbyopia with Astigmatism 2.25 D or more	 Duette Progressive Enhanced Profile Near or Distance Zone	
Emerging Keratoconus	 UltraHealth	 UltraHealth FC
Moderate Keratoconus (low cone)	 UltraHealth FC	 UltraHealth
Moderate Keratoconus (central cone)	 UltraHealth	 SynergEyes KC
Advanced Keratoconus	 UltraHealth	 SynergEyes KC
Early Pellucid Marginal Degeneration	 UltraHealth FC	 UltraHealth
Moderate Pellucid Marginal Degeneration	 UltraHealth FC	 UltraHealth
Advanced Pellucid Marginal Degeneration	 UltraHealth	
Post Keratoplasty - Oblate Graft	 UltraHealth FC	
Post Keratoplasty - Prolate Graft	 UltraHealth	
Post Surgical Ectasia (mild to moderate)	 UltraHealth FC	 UltraHealth
Post Surgical Ectasia (severe)	 UltraHealth	

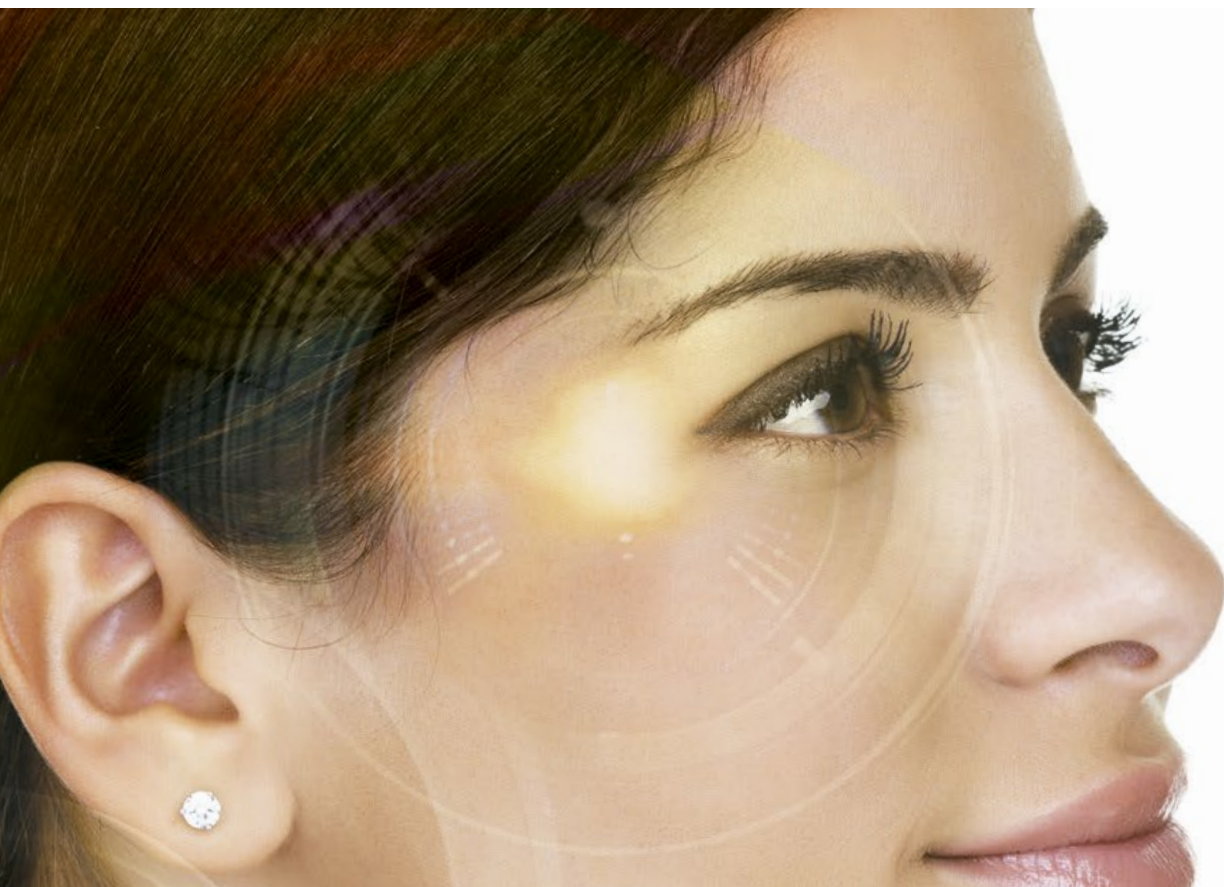
Legend: 

Hybrid Lenses Normal Cornea 

Hybrid Lenses Irregular Cornea

## PORTFOLIO OF PROVEN HYBRID PRODUCTS FOR A RANGE OF CORNEAL CONDITIONS

SynergEyes has a range of advanced-technology hybrid contact lens products to meet the needs of your contact lens patients. Offered exclusively to independent eye care professionals, SynergEyes provides proprietary hybrid lenses for astigmatism, presbyopia and irregular cornea conditions. Differentiate your practice and increase profitability by offering SynergEyes contact lens products.



## PRACTITIONER-CENTRIC TECHNOLOGY

SynergEyes has a suite of technology and services designed to provide an outstanding customer experience. The SynergEyes Product Matrix (page 2) outlines product offerings based on the continuum of corneal conditions.

**Hybrid  
Astigmatism**

# Duette®

C O N T A C T L E N S E S

The unique advanced-technology Duette hybrid contact lens is ideal for patients with astigmatism, especially those who have experienced discomfort with GP lenses or frustration with fluctuating soft toric vision.

Duette provides the optimal, clear vision of a GP lens, with soft lens comfort. The hybrid design eliminates rotation issues experienced with soft toric lenses, while providing stable centration for excellent visual acuity. SoftCushion® Comfort Technology enhances tear exchange and lens movement.

Fitting Duette is straightforward; lenses may be fitted empirically with Ks and Rx, without the need for diagnostic sets or fluorescein.

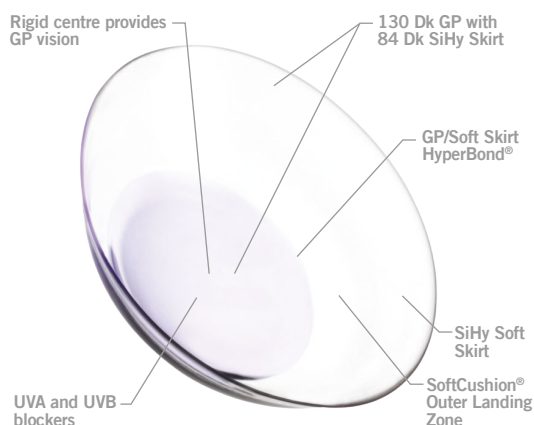
The Duette Empirical Calculator can be used to help select the initial lens [www.duettecalculator.com](http://www.duettecalculator.com)

## LENS BENEFITS

- High performance vision for astigmatism
- Uncompromised GP optics
- SoftCushion® Comfort Technology
- Hybrid platform offers centration and stability
- Vision is not affected by lens rotation
- Excellent protection of ocular health: 130-Dk GP centre; 84-Dk silicone hydrogel soft skirt
- UVA and UVB blocker for sun protection
- Straightforward empirical fitting

## DESIGN

- Dual aspheric permeable centre delivers exceptional vision
- Patented HyperBond® junction secures GP centre and soft skirt
- SoftCushion® Outer Landing Zone cushions for increased comfort
- Enhanced Profile (centre Thickness) option available



## PARAMETERS

Skirt Curves	Base Curves	Lens Powers	Diameter	Materials	Enhanced Profile
8.7 Flat2, 8.4 Flat, 8.1 Medium	7.1 to 8.3 in 0.1mm steps	+10.00 to -15.00 D +8.00 to -8.00 D in 0.25 D steps +8.50 to +10.00 D in 0.50 D steps -8.50 to -15.00 D in 0.50 D steps	14.5mm	84 Dk SiHy skirt, 130 Dk GP centre Class II UVA / UVB Blocker	Centre Thickness option available



Skirt Curves	Base Curves	Lens Powers	Materials	Add Power (for SynergEyes MF)
1.0 and 1.3 flatter than base	7.0 to 8.2 in 0.1mm steps	+20.00 to -20.00D	Hema skirt, 100 Dk GP centre	+0.75 D +1.25 D +1.75 D +2.25 D

**LENS BENEFITS**

The advanced-technology, 2nd generation UltraHealth hybrid contact lens is indicated for patients with keratoconus, as well as many other irregular corneas. With a 14.5mm total diameter and an 8.5mm gas permeable centre, UltraHealth is designed to vault the corneal ectasia, providing excellent GP vision along with great centration and comfort provided by the soft skirt. Thousands of eye care professionals have experienced more straightforward fitting and greater lens stability with better centration and comfort from this most advanced hybrid lens.

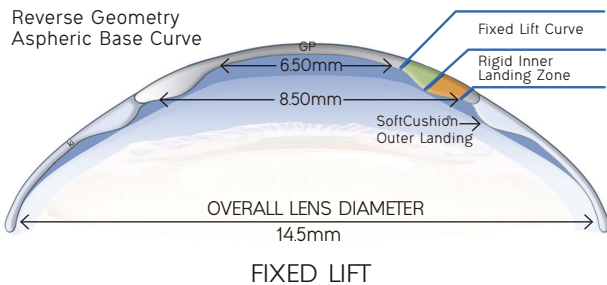
A diagnostic fitting set can be used to determine the appropriate initial lens order.

- Proven hybrid platform offers vision, comfort, centration and lens stability for irregular cornea patients
- New fitters rate UltraHealth "much more straightforward" to fit than other irregular cornea lenses
- Patients experience vision "one or two lines better than their previous modality"
- Patients were "happy or very happy with the visual outcome"
- Excellent protection of ocular health: 130-Dk GP centre; 84-Dk silicone hydrogel soft skirt
- UVA and UVB blocker for sun protection

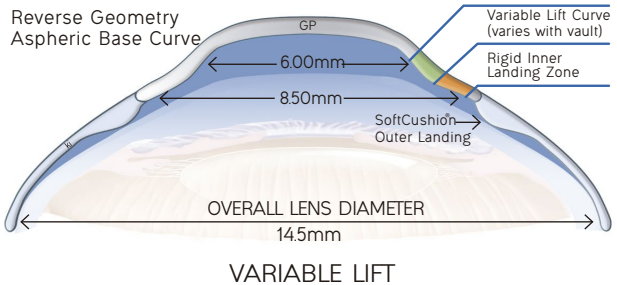
**DESIGN**

- Aspheric, reverse geometry vaulted lens design for clear GP vision
- Patented HyperBond® junction secures GP centre and soft skirt
- SoftCushion® Outer Landing Zone cushions for increased comfort
- UVA and UVB blockers to protect the eye from harmful rays

**UltraHealth Lens Design Vaults 50µ-250µ**



**UltraHealth Lens Design Vaults 300µ-550µ**



**PARAMETERS**

Skirt Curves	Base Curves	Lens Powers	Materials
50-250µ: 8.7 Flat2, 8.4 Flat, 8.1 Med, 7.9 Steep 300-550µ: 8.4 Flat, 8.1 Med, 7.9 Steep	50 to 550 in 50µ steps	+10.00 to -20.00 D +2.50 to +10.00 D in 0.50 D steps +2.00 to -8.00 D in 0.25 D steps -8.50 to -20.00 in 0.50 D steps	84 Dk SiHy skirt, 130 Dk GP centre, Class II UVA / UVB Blocker

**PARAMETERS** *ClearKone*  
hybrid contact lenses for keratoconus

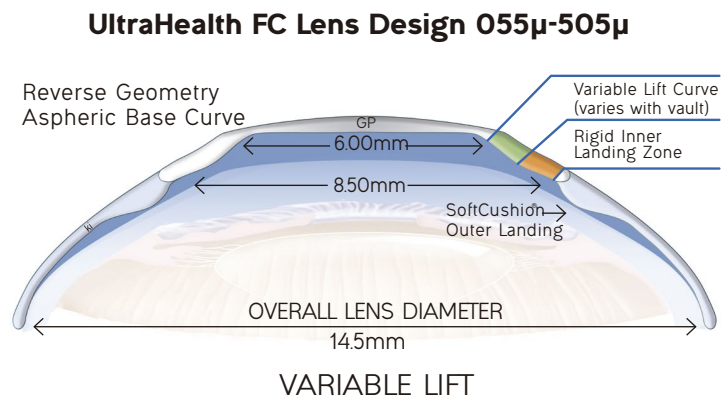
Vault Values	Base Curves	Lens Powers	Materials
50 to 650 in 50µ steps	Flat, Medium, Steep, Steep2	+10.00 to -20.00 D	Hema skirt, 100 Dk GP center

The UltraHealth FC hybrid contact lens is an extension of the UltraHealth product line. It is indicated for eyes with refractive errors resulting from corneal surgery or trauma including hyperopia, myopia, astigmatism and irregular astigmatism. The design of the lens works well with oblate corneas or corneas that may need more peripheral lift.

A diagnostic fitting set can be used to determine the appropriate initial lens order.

## DESIGN

- Aspheric, reverse geometry vaulted lens design for clear GP vision
- Includes flatter base curves than standard UltraHealth
- Patented HyperBond<sup>®</sup> junction secures GP centre and soft skirt
- SoftCushion<sup>®</sup> Outer Landing Zone cushions for increased comfort
- UVA and UVB blockers to protect the eye from harmful rays



## PARAMETERS

Skirt Curves	Base Curves	Lens Powers	Diameter	Materials
8.4 Flat, 8.1 Medium, 7.9 Steep	55 to 505 in 50 $\mu$ steps	+10.00 D to -20.00 D +2.50 to +10.00 in 0.50 D steps +2.00 to -8.00 in 0.25 D steps -8.50 to -20.00 in 0.50 D steps	14.5mm	84 Dk SiHy skirt, 130 Dk GP centre, Class II UVA / UVB Blocker

## PARAMETERS SynergEyes<sup>®</sup> KC

Skirt Curves	Base Curves	Lens Powers	Materials
Flat, Medium, Steep	5.3 to 7.1 in 0.2 mm steps	+8.00 to -20.00 D in 0.50 D steps	Hema skirt, 100 Dk GP center

## LENS CARE RECOMMENDATIONS

The standard of care for hybrid contact lenses is to clean, rinse and disinfect lenses each time they are removed using solutions approved for soft contact lenses. Call our Technical Support team for further advice on lens care at +1.760.476.9410 option 2 or Email: [consultation@synergeyes.com](mailto:consultation@synergeyes.com)

Use chemical (not heat) disinfection systems (Multi-Purpose or Hydrogen Peroxide\* solutions) approved for soft contact lenses, as recommended by your eye care professional.



Duette Progressive is available in both Center Distance and Center Near designs. The Center Distance lens has adjustable center distance optics: the Center Distance zone size ranges from 1.8 - 4.0mm, driven by photopic pupil size. Add powers range from +0.75 to +5.00 D. The Duette Progressive Center Near design provides a seamless progression of power from near to distance and a choice of three add powers.

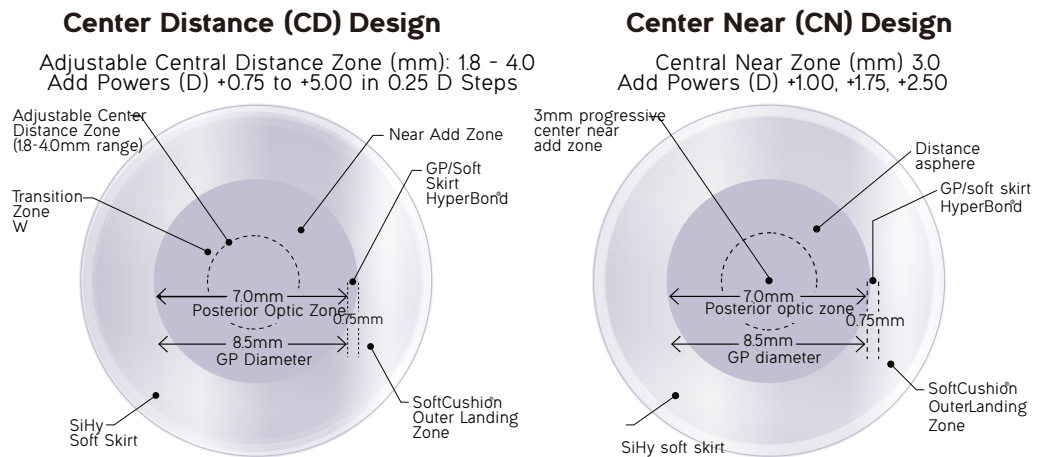
Fitting Duette Progressive is straightforward. Lenses may be fit empirically without the need for diagnostic sets or fluorescein. Provide Ks, Rx and HVID, with add power and pupil size to create the initial lens. The Duette Empirical Calculator ([DuetteCalculator.com](http://DuetteCalculator.com)) can be used to help select the initial lens.

## LENS BENEFITS

- High performance vision for the Continuum of Presbyopia especially astigmatic presbyopes: emerging, moderate, and advanced.
- Uncompromised GP optics
- SoftCushion<sup>®</sup> Comfort Technology
- Excellent ocular health: 130-Dk GP center; 84-Dk silicone hydrogel soft skirt
- Hybrid platform offers centration and stability which are very important for multifocal vision. Vision is not affected by lens rotation
- UVA and UVB blocker for sun protection
- Straightforward empirical fitting

## DESIGN

- Dual aspheric gas permeable center delivers exceptional vision
- Center Distance and Center Near Designs
- Patented HyperBond<sup>®</sup> junction secures GP center and soft skirt
- SoftCushion<sup>®</sup> Outer Landing Zone cushions for increased comfort
- Enhanced Profile (center thickness) option also available



## PARAMETERS

Base Curves (mm)	Skirt Radius	Diameter (mm)	Lens Powers (D)	Materials	Enhanced Profile
7.1 to 8.3 in 0.1mm steps	8.1 (Medium) 8.4 (Flat) 8.7 (Flat2)	14.5	+5.50 to -10.00 D +5.50 to -8.00 D in 0.25 D steps -8.50 to -10.00 D in 0.50 D steps	130 Dk GP center 84 Dk SiHy skirt Class II UVA / UVB Blocker*	Center Thickness option available



# S P E C T R U M

I N T E R N A T I O N A L

 [www.spctinternational.com](http://www.spctinternational.com)   [spctinternational](https://www.instagram.com/spctinternational)

 [Spectrum International](https://www.youtube.com/Spectrum International)  [sales@spctinternational.com](mailto:sales@spctinternational.com)