

SPECTRUM
INTERNATIONAL

SPECTRUM
color

SPECTRUM color

Curvas múltiples y un material de alta transparencia hacen que la visión sea clara

Circulación suave de la lágrima gracias a su material de alta humectabilidad

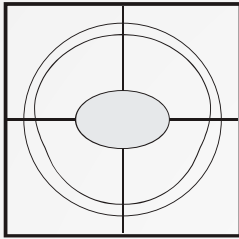
Confort duradero para los usuarios

Los lentes de contacto **SPECTRUM Color** ofrecen una comodidad duradera a los usuarios. Nuestros lentes están fabricados con el clásico material polimacon, que sigue siendo ampliamente reconocido por su rendimiento duradero y fiable en todos los entornos.

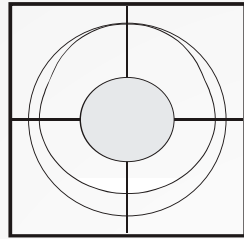
El avanzado diseño "in-toric" reduce el movimiento del eje. La "zona" circular realiza una corrección visual superior en el movimiento del lente. El rango óptico ilimitado de los lentes tóricos, el cilindro y el eje aportan a los usuarios una adaptación individualizada, "PRECISE FIT".

**Asegurando la claridad visual
con una amplia zona óptica**

La zona óptica, formada por un sofisticado diseño, permite a los usuarios captar amplias vistas desde cualquier ángulo.



Otras marcas



SPECTRUM color

SPECTRUM color

Material	62% polimacon, 38% contenido de agua
Curva Base	8.60
Diámetro	14.50mm
Color gráfico	Fabricación a medida
Potencia	0.00 a ±25.00D 0.00 a ±6.00D (en pasos de 0.25D) ±6.50 a ±25.00D (en pasos de 0.50D)
Potencia del cilindro	-0.50 a -7.00D (en pasos de 0.25D)
Eje	De 5° a 180° (en pasos de 5°)
Marcas del eje	Indicación de tres líneas a las 6
Espesor Central Nominal	0.130mm @-3.00D
Dk/t @-3.00D	7.51x10 ⁻⁹ (cm/s)(mIO ₂ /ml.mmHg)
Permeabilidad al oxígeno Dk@35°C	9.77x10 ⁻¹¹ (cm ² /s)(mIO ₂ /ml.mmHg)
Pack	Vial: 1 lente

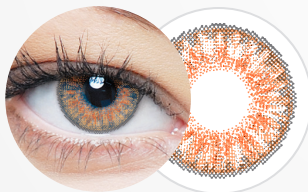
*Más colores disponibles

**Podemos diseñar el color que usted requiera.

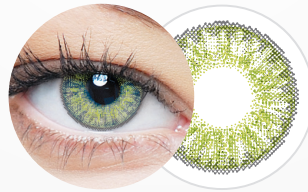


Anual

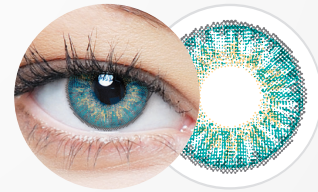
Lente de color de 3 tonos



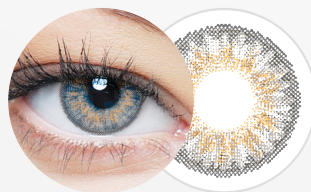
Tangerine
(CL365N)



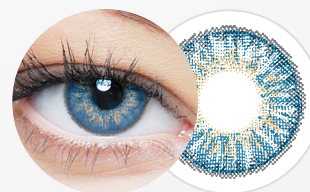
Olive
(CL370N)



Turquoise
(CL304N)



Gray
(CL301N)



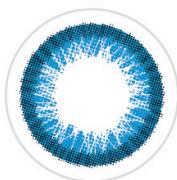
Dusk Blue
(CL367N)

**Nuestro lente correctivo de alta calidad le brinda un
lente de color mejorado con una visión limpia y clara**

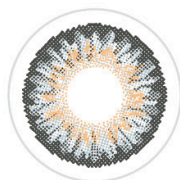


Diario

Material	Hioxifilcon A, 58% H ₂ O
Curva Base	8.60
Diámetro	14.20 mm
Potencia	-10.00 a +6.00D -0.50 a -6.00D (pasos de 0.25D) -6.50 a -10.00D (pasos de 0.50D) +0.50 a +4.00D (pasos de 0.25D) +4.50 a +6.00D (pasos de 0.50D)
Pack	10 Lentes
Reemplazo	Diario



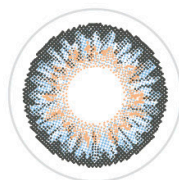
Light Blue
(CL240)



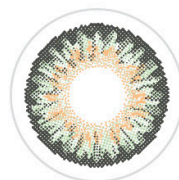
Gray
(FL331)



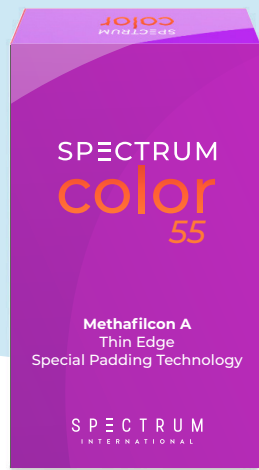
Hazel
(FL332)



Blue
(FL333)

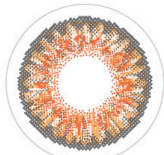


Green
(FL334)

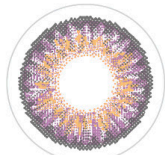


Trimestral

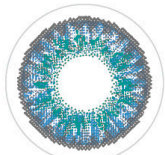
Material	Methafilcon A, 55% H ₂ O
Curva Base	8.60
Diámetro	14.20 mm
Potencia	-10.00 a +6.00D -0.50 a -6.00D (pasos de 0.25D) -6.50 a -10.00D (pasos de 0.50D) +0.25 a +4.00D (pasos de 0.25D) +4.50 a +6.00D (pasos de 0.50D)
Pack	2 Lentes
Reemplazo	Trimestral



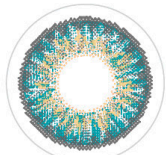
Tangerine
(FL301N)



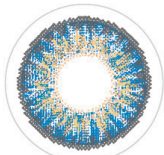
Violet
(FL302N)



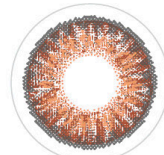
Emerald
(FL303N)



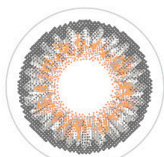
Turquoise
(FL304N)



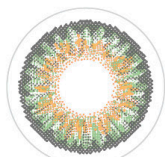
Dusk Blue
(FL305N)



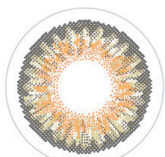
Brown
(FL306N)



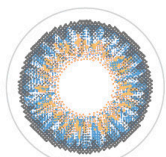
Gray
(FL307N)



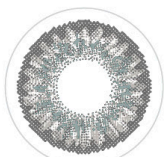
Green
(FL308N)



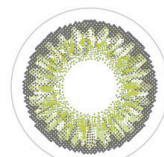
Marigold
(FL309N)



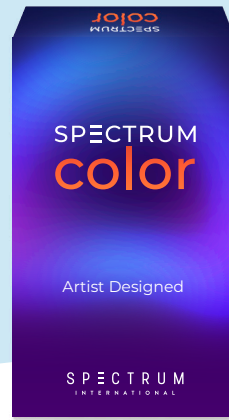
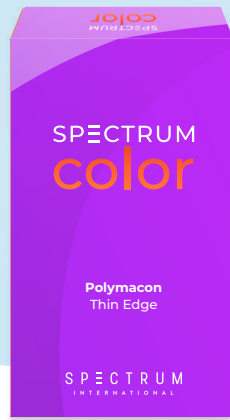
Serenity
(FL310N)



Cloud
(FL311N)



Olive
(FL312N)



Trimestral

Material	Polymacon, 38% H ₂ O		
Curva Base	8.60	Diámetro	14.20 mm
Potencia	-10.00 a +6.00 -0.00 a -6.00 (pasos 0.25D) -6.50 a -10.00 (pasos 0.50D) +0.50 a +6.00 (pasos 0.50D)		
Pack	2 Lentes	Reemplazo	Trimestral



Light Blue
(CL134N)



Brown
(CL135N)



Green
(CL136N)



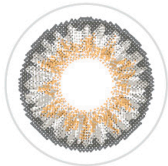
Violet
(CL137N)



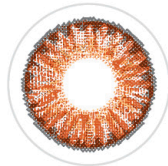
Aqua Blue
(CL138N)



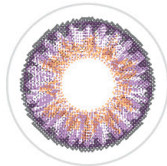
Gray
(CL139N)



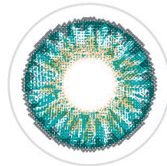
Gray
(CL301N)



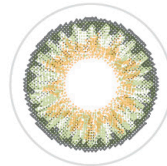
Brown
(CL302N)



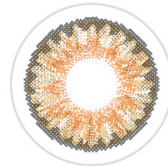
Violet
(CL303N)



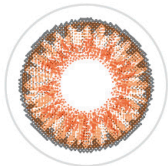
Turquoise
(CL304N)



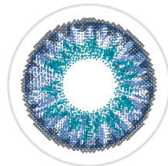
Green
(CL305N)



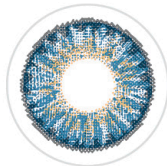
Marigold
(CL364N)



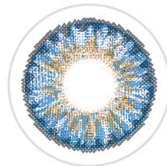
Tangerine
(CL365N)



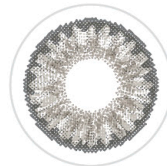
Emerald
(CL366N)



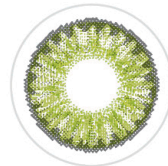
Dusk Blue
(CL367N)



Serenity
(CL368N)



Cloud
(CL369N)



Olive
(CL370N)

**Más colores disponibles*

***Podemos diseñar el color que usted requiera.*



Spectrum Color Halloween 1 Día

Material	Polymacon, 38% H ₂ O		
Curva Base	8.60	Diámetro	14.20 mm
Potencia	0.00 a -6.00D (pasos de 0.25D)		
Pack	2 Lentes	Reemplazo	Diario



Black Out
(FN101N)



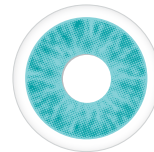
Red Vampire
(FN102N)



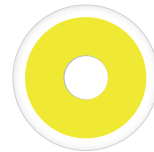
White Out
(FN103N)



Angelic White
(FN104N)



Blue Walker
(FN105N)



Zombie Yellow
(FN106N)

Spectrum Color Halloween

Material	Polymacon, 38% H ₂ O		
Curva Base	8.60	Diámetro	14.20 mm
Potencia	0.00		
Pack	2 Lentes	Reemplazo	Mensual



Angelic Blue
(FN002N)



Angelic Red
(FN004N)



Black Out
(FN009N)



Black Wolf
(FN010)



Lestat
(FN030N)



White Out
(FN067N)



Banshee
(FN006)



Manson
(FN032)



Red Cat
(FN042N)



Red Vampire
(FN044)

S P E C T R U M

I N T E R N A T I O N A L



✉ sales@spctinternational.com

☎ +1 (470) 208-7030



www.spctinternational.com